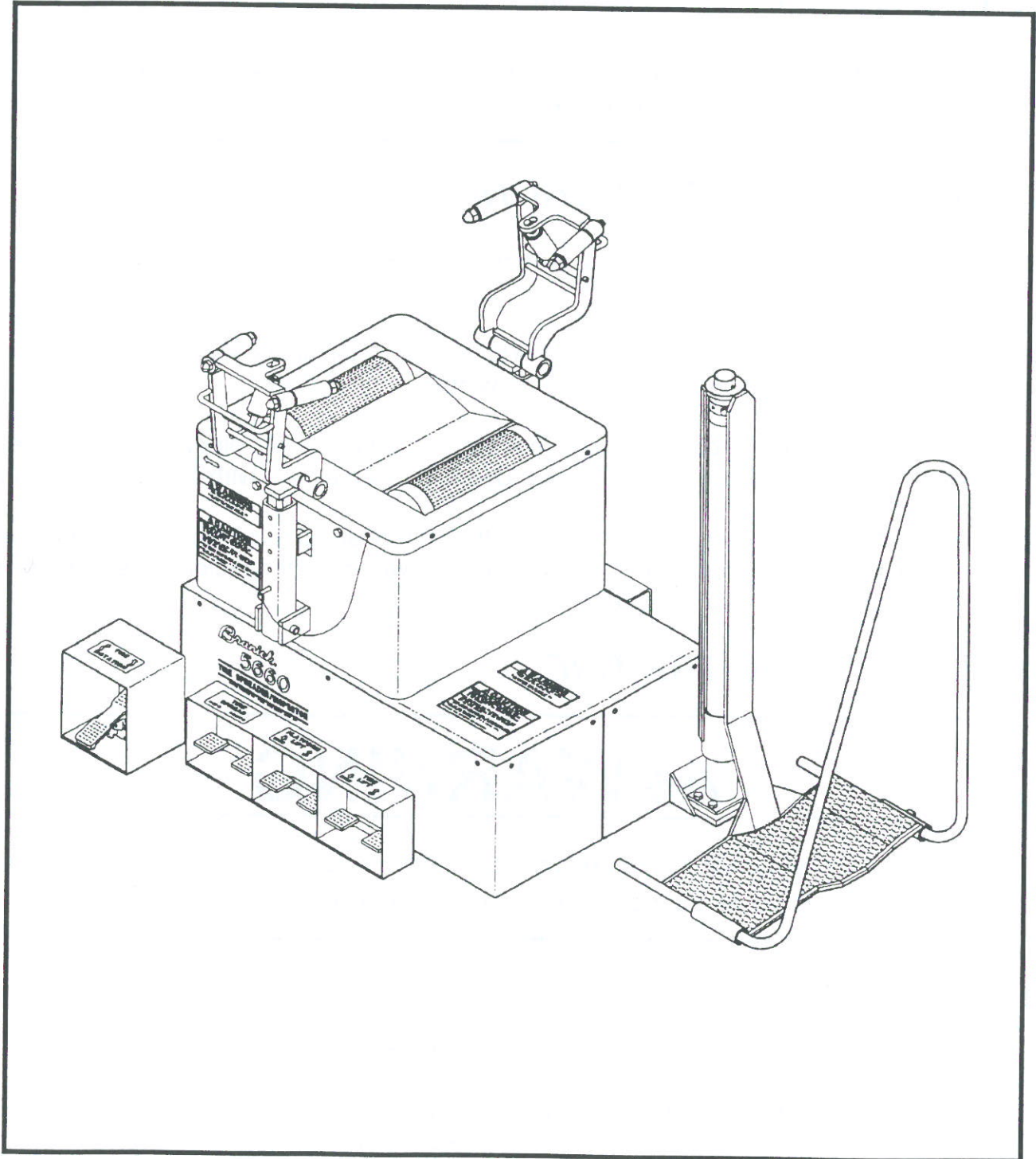


Branick[®]
INDUSTRIES, Inc.

MODEL 5660
Tire Spreader
Inspector

Operating Instructions
and Repair Parts
Information



P/N: 81-0024

CAUTION

- ◆ Before using this product, read and fully understand the operating instructions and all decals on the product. This is necessary to prevent injury to the operator and damage to the product.
- ◆ Use this product only for lifting, spreading and inspecting tire casings. Do not attempt to lift any tire over 300 pounds or use this product for any other purpose.
- ◆ Do not use this product if it is visibly worn, distorted or damaged.
- ◆ Always wear appropriate eye protection.

Step 1. SHOP INSTALLATION

- A) Position the Model 5660 on a solid level floor leaving a minimum of 16 inches of clearance from the sides and rear of machine.
- B) Insert tire guard into tubes on lift cradle. Tighten the nylon set screw to proper tension to allow tire guard adjustment for different tire widths.
- C) Attach a 1/2 NPT quick coupler nipple (not provided) into the 90° elbow fitting on the filter assembly located at the rear of machine. Use a 1/2 inch air line with 100 p.s.i. minimum.
- D) The regulator assembly has been preset at the factory at 100 p.s.i. and must not be set any higher. Although the lubricator has been filled with oil at the factory, check to be sure oil has not leaked out during shipment.

Step 2. LIFTING THE TIRE

WARNING

- ◆ Keep feet clear of the tire lift cradle when raising and lowering tire.
- ◆ All personnel must be clear of the tire lift area during operation.

- A) Make sure the spreader platform is in the lowest position.
- B) Pull the spread roller arms into the upright position away from the traction rollers.
- C) Roll the tire onto the lift cradle. Steady the tire with your right hand and press the tire lift foot valve. The lift cradle will automatically rotate toward the traction rollers as it is moving upward. Keep the tire lift foot valve depressed and roll the tire onto the traction rollers. Release tire lift foot valve and the lift cradle will return to the down position.

Step 3. SPREADING THE TIRE

- A) Adjust the spreader platform to the most comfortable working height using the platform lift foot valve.
- B) Place the spread roller arms between tire beads and adjust them to the proper height for the tire size being inspected. The spread roller arms are held in position with a hitch pin. To adjust the spread roller arms, pull the hitch pin and move spread roller arm up or down to one of the five adjustment holes. Most larger truck tires will use the uppermost adjustment holes. Both spread roller arms must be adjusted to the same height. Adjustment to the opposite side spread roller arm can be made by rotating the spreader platform 180°.
- C) Spread tire to desired width using the spread foot valve. If tire is lifted off traction rollers when it is spread, the spread roller arms are positioned too high and should be lowered.



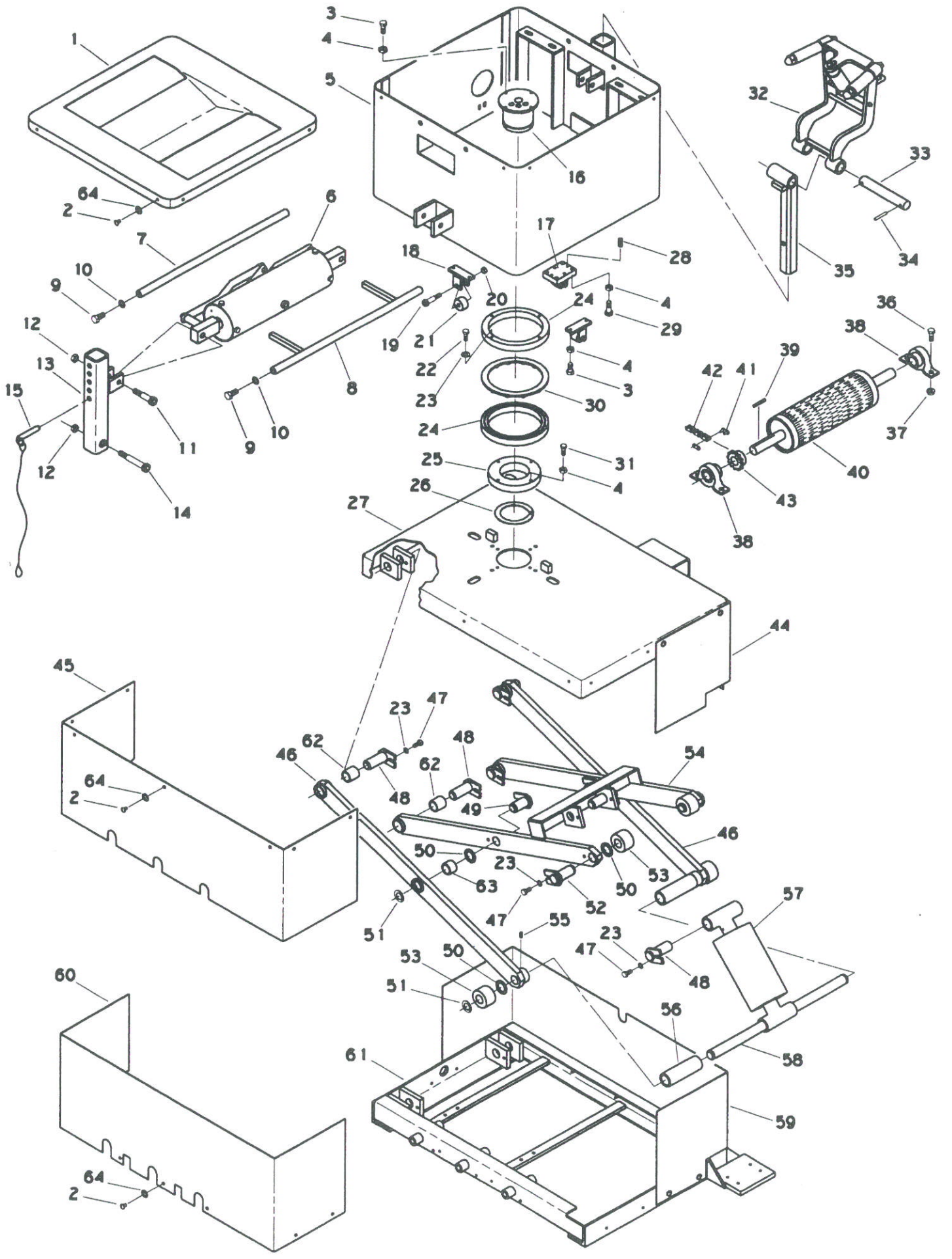
CAUTION

Keep fingers and hands clear of spread roller arms and traction rollers during tire spread and rotation.

- D) The tire can now be rotated in either direction using the rotation treadle valve.
- E) Full inside and outside inspection of the tire can be made with the operator remaining in one location using the 180° spreader platform rotation.

Step 4. REMOVING THE TIRE

- A) Lower spreader platform to the lowest position.
- B) Remove spread roller arm pressure and remove the spread roller arms from the tire bead.
- C) Press the tire lift foot valve until the lift cradle has rotated into position next to the traction roller. While keeping the tire lift foot valve depressed, roll the tire onto the lift cradle. Steady the tire with your right hand and release the tire lift foot valve and guide the tire to the floor.

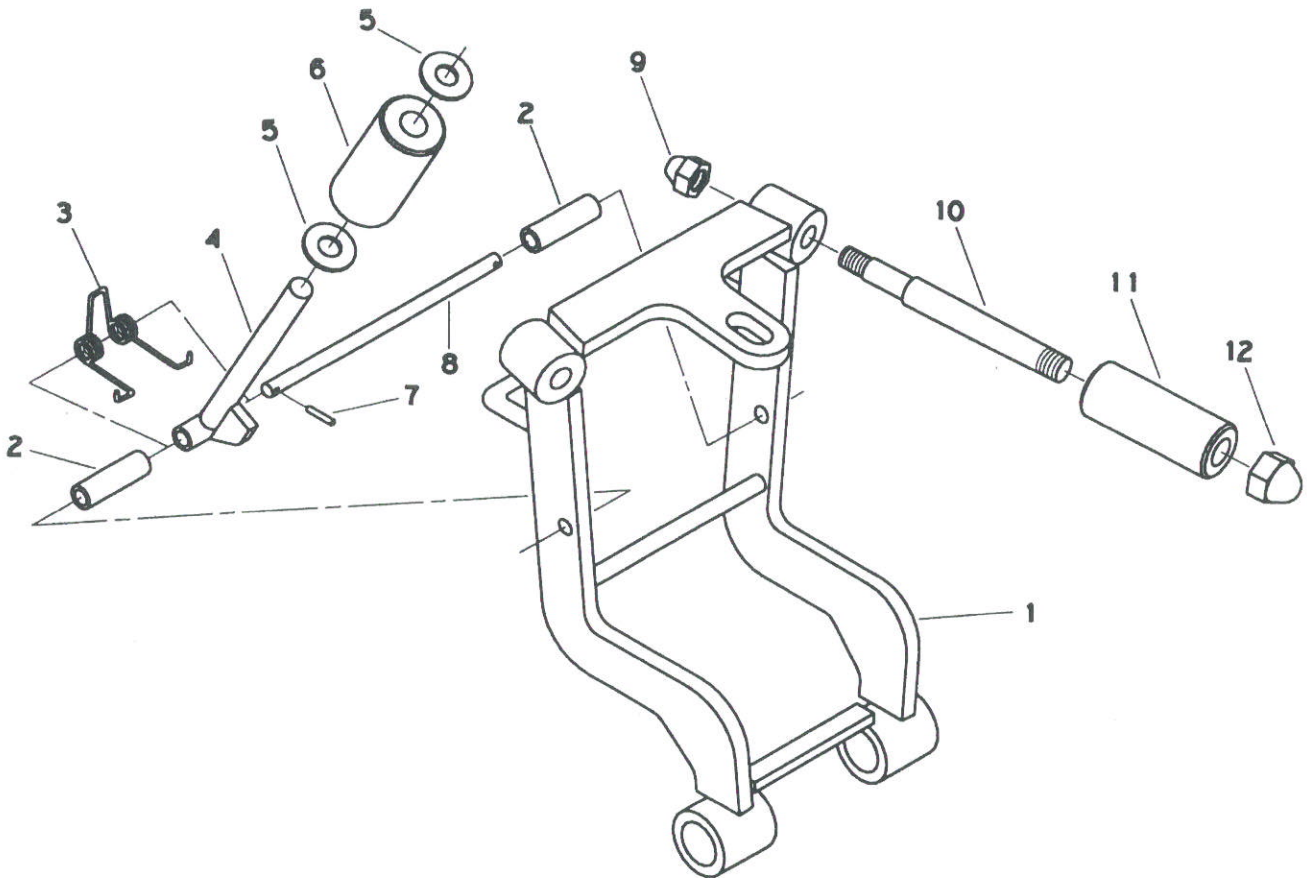


MAIN ASSEMBLY

ITEM	PART NO	QTY	DESCRIPTION
1	72-0047	1	Cover Panel
2	50-0042	36	1/4-20 X 3/8 Pan Head Machine Screw
3	028-010	12	1/4-20 X 3/4 Hex Head Cap Screw
4	055-160	20	1/4-20 Nylon Hex Lock Nut
5	03-0085	1	Spreader Housing
6	01-0100	1	Spread Cylinder
7	73-0303	1	Stabilizer Rod
8	03-0098	1	Cylinder Stabilizer Rod
9	028-159	4	1/2-13 X 1 Hex Head Cap Screw
10	108-056	4	1/2 Internal Tooth Lock Washer
11	028-243	2	1/2 X 1-3/4 Hex Socket Head Shoulder Screw
12	055-154	4	3/8-16 Nylon Hex Lock Nut
13	01-0099	2	Spread Arm Sleeve
14	028-282	2	1/2 X 2-3/4 Hex Socket Head Shoulder Screw
15	01-0114	2	Cable & Pin
16	73-0278	1	Pivot Manifold
17	03-0077	1	Detent Bracket
18	03-0076	4	Roller Bracket
19	028-245	5	3/8 X 1-1/4 Hex Socket Head Shoulder Screw
20	055-145	5	5/16-18 Nylon Hex Lock Nut
21	11-0022	5	Nylon Roller
22	028-280	8	5/16-18 X 1/2 Hex Head Cap Screw
23	108-067	18	5/16 Internal Tooth Lock Washer
24	74-0068	2	Bearing Race
25	73-0279	1	Manifold Sleeve
26	54-0012	1	3" Retaining Ring
27	03-0082	1	Pivot Platform
28	110-016	4	Spring
29	028-353	4	5/16 X 1 Hex Socket Head Shoulder Screw
30	107-043	1	Thrust Bearing Retainer
31	028-078	4	1/4-20 X 1-1/2 Hex Head Cap Screw
32	01-0097	2	Spread Roller Arm
33	73-0310	2	Pivot Pin
34	061-043	4	3/16 X 1-1/4 Spring Pin
35	03-0105	2	Spread Arm
36	028-021	8	3/8-16 X 1 Hex Head Cap Screw
37	055-103	8	3/8-16 Flanged Hex Lock Nut
38	107-020	4	Pillow Block Bearing
39	251-026	2	Key
40	03-0110	2	Traction Roller
41	062-045	1	Connecting Link
42	066-050	1	Chain
43	228-048	2	Sprocket
44	72-0045	1	Upper Rear Panel
45	72-0043	1	Upper Front Panel
46	01-0082	2	Outer Lift Arm
47	028-012	10	5/16-18 X 3/4 Hex Head Cap Screw
48	03-0106	6	Pivot Pin
49	03-0107	2	Pivot Pin
50	039-007	6	1" Machinery Bushing
51	044-048	6	1" Retaining Ring
52	03-0108	2	Roller Rod
53	11-0023	4	Nylon Roller
54	03-0079	1	Inner Lift Arm
55	028-027	2	1/4-20 X 1/2 Hex Socket Set Screw

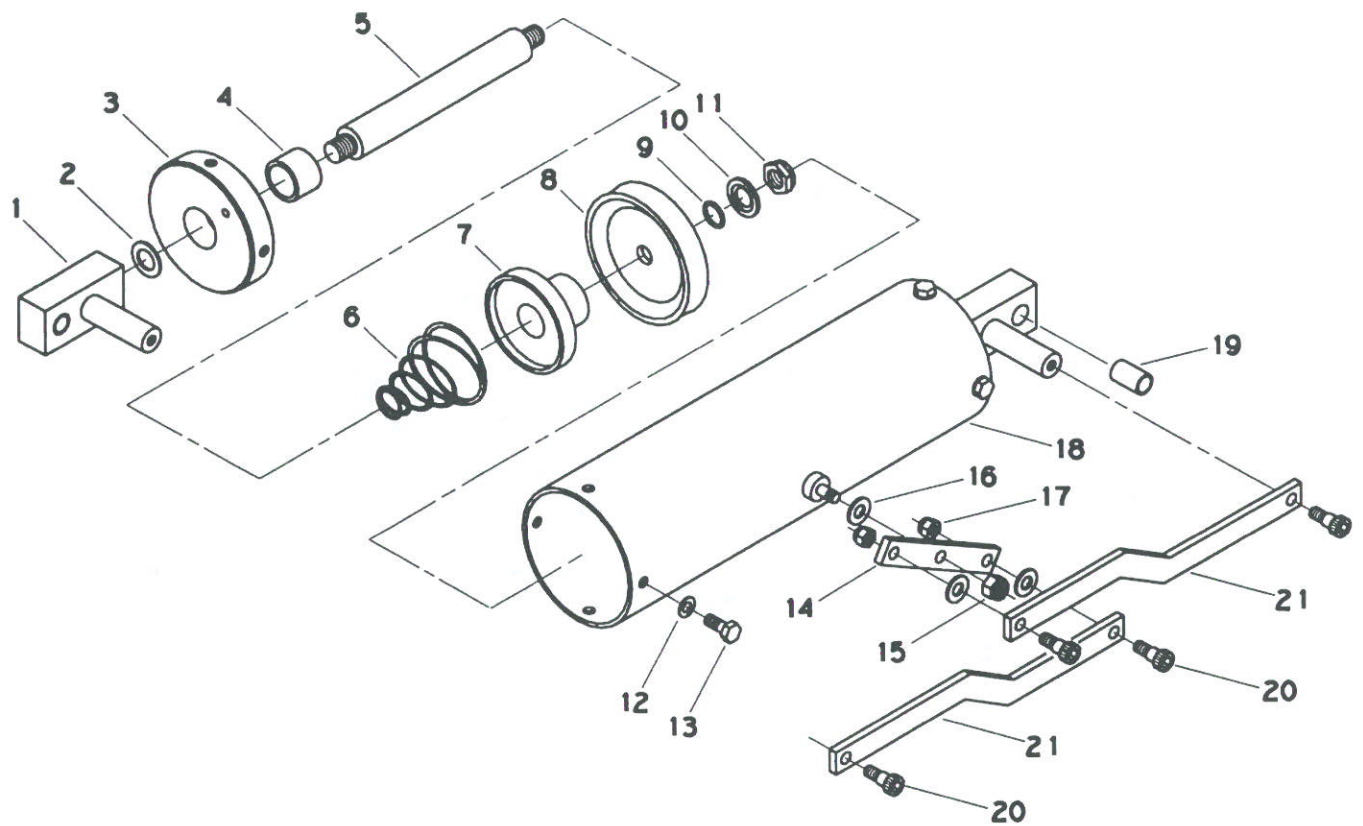
MAIN ASSEMBLY

ITEM	PART NO	QTY	DESCRIPTION
56	74-0076	2	Shaft Sleeve
57	01-0095	1	Platform Lift Cylinder
58	73-0301	1	Lower Roller Rod
59	72-0044	1	Lower Rear Panel
60	72-0042	1	Lower Front Panel
61	03-0080	1	Base
62	20-0015	4	Sleeve Bearing
63	039-041	2	Sleeve Bearing
64	108-008	36	1/4 Internal Tooth Lock Washer



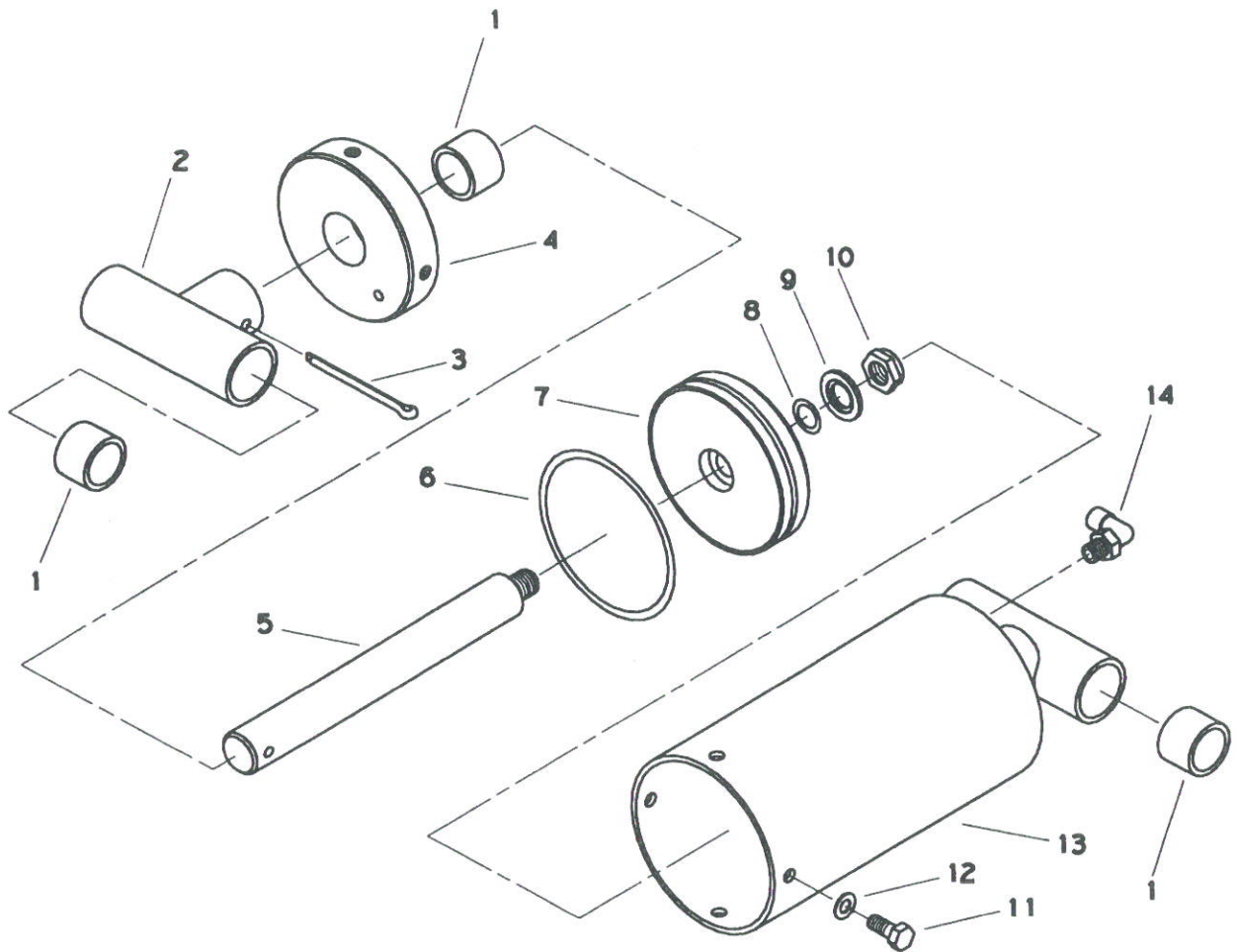
SPREAD ROLLER ARM ASSEMBLY

ITEM	PART NO	QTY	DESCRIPTION
1	03-0101	1	Spread Roller Arm
2	446-071	2	Sleeve
3	110-025	1	Bead Roller Spring
4	863-004	1	Bead Roller Shaft
5	108-044	2	1/2 SAE Flat Washer
6	11-0025	1	Bead Roller
7	061-032	2	1/8 X 3/4 Spring Pin
8	104-082	1	Pivot Pin
9	055-071	2	1/2-13 Hex Acorn Nut
10	104-079	2	Spread Roller Shaft
11	11-0024	2	Spread Roller
12	055-072	2	5/8-11 Hex Acorn Nut



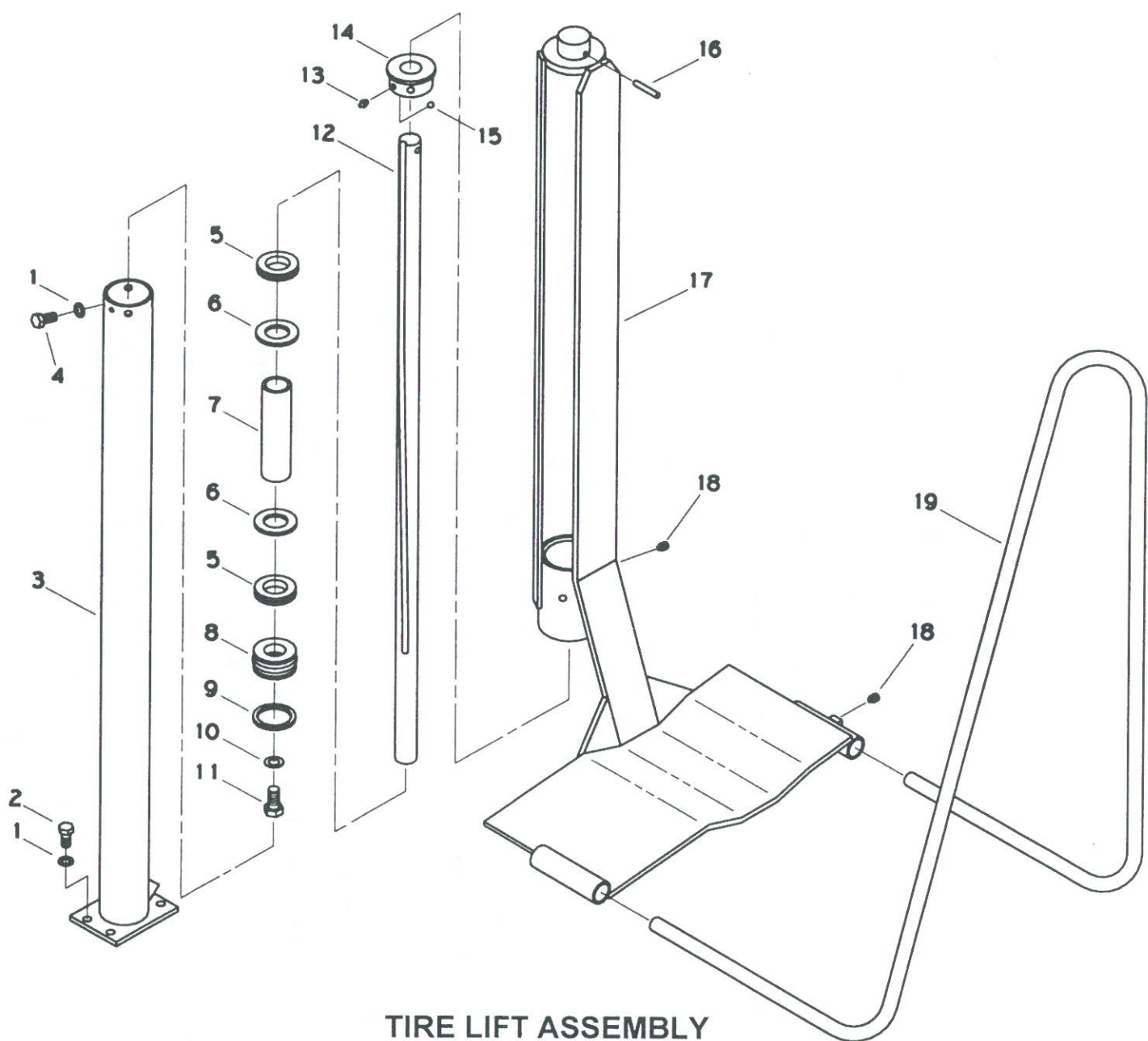
SPREAD CYLINDER ASSEMBLY

ITEM	PART NO	QTY	DESCRIPTION
1	01-0098	2	Linkage Clevis with Bearing
2	108-026	2	5/8 Internal Tooth Lock Washer
3	01-0094	2	Cover Plate with Bearing
4	039-041	2	Sleeve Bearing
5	73-0309	2	Piston Rod
6	110-007	2	Conical Spring
7	03-0102	2	Spring Seat
8	051-030	2	4" Piston
9	041-049	2	O-Ring
10	52-0036	2	Wrought Washer
11	055-111	2	9/16-18 Nylon Hex Lock Nut
12	108-067	8	5/16 Internal Tooth Lock Washer
13	028-012	8	5/16-18 X 3/4 Hex Head Cap Screw
14	73-0218	1	Linkage Equalizer Bar
15	055-154	1	3/8-16 Nylon Hex Lock Nut
16	108-015	3	3/8 SAE Flat Washer
17	055-145	2	5/16-18 Nylon Hex Lock Nut
18	03-0103	1	Cylinder Tube
19	039-024	2	Sleeve Bearing
20	028-197	4	3/8 X 3/8 Hex Socket Head Shoulder Screw
21	73-0217	2	Linkage Bar



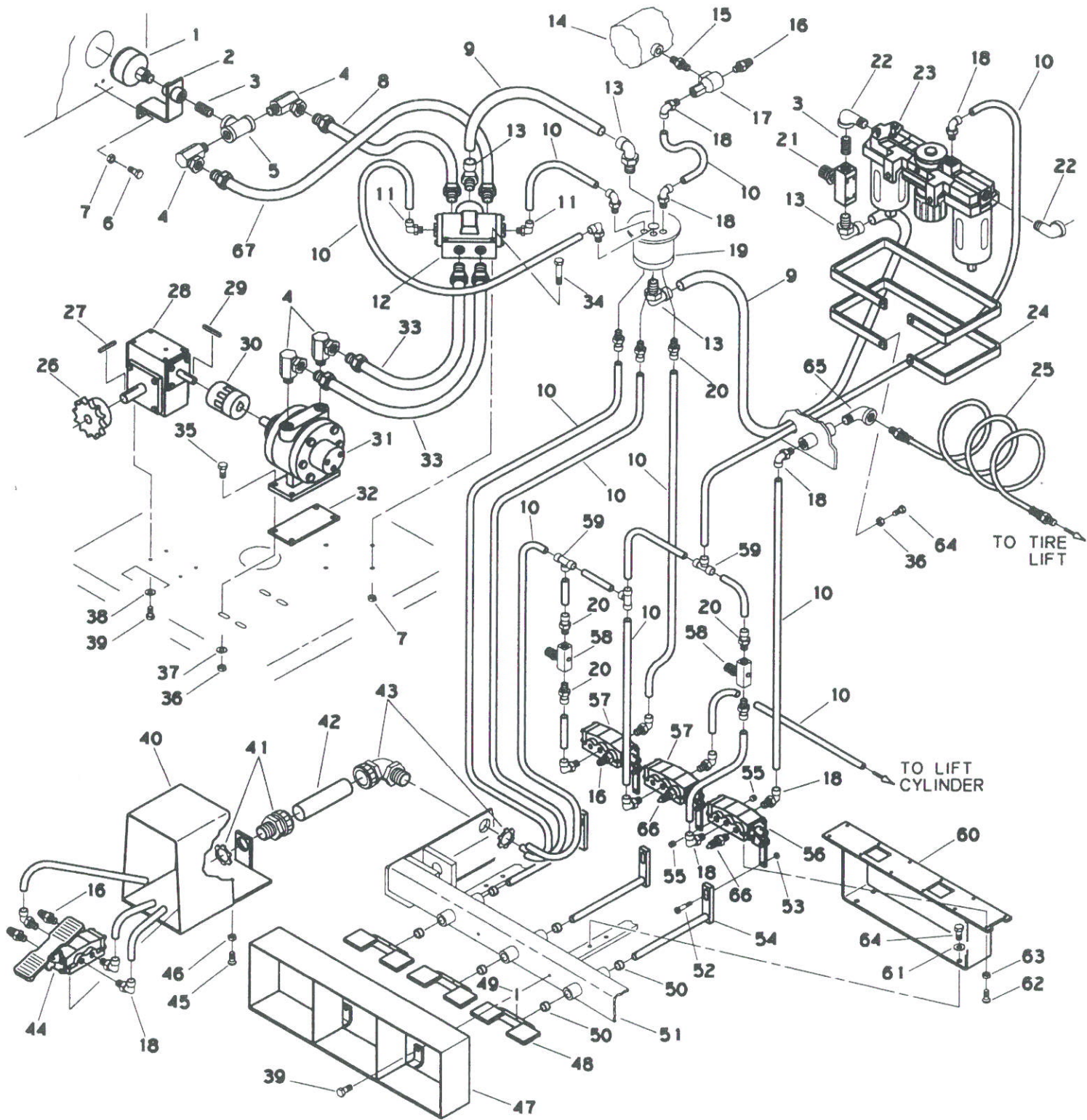
PLATFORM LIFT CYLINDER ASSEMBLY

ITEM	PART NO	QTY	DESCRIPTION
1	039-041	5	Sleeve Bearing
2	01-0074	1	Rod End with Bearing
3	061-166	1	3/16 X 2-1/2 Cotter Pin
4	01-0094	1	Cover Plate with Bearing
5	73-0276	1	Piston Rod
6	61-0024	1	O-Ring
7	73-0520	1	4" Piston
8	041-049	1	O-Ring
9	52-0036	1	Wrought Washer
10	055-111	1	9/16-18 Nylon Hex Lock Nut
11	028-012	4	5/16-18 X 3/4 Hex Head Cap Screw
12	108-067	4	5/16 Internal Tooth Lock Washer
13	03-0100	1	Cylinder Tube
14	096-342	1	1/4 NPT X 1/4 Tube 90 Degree Fitting



TIRE LIFT ASSEMBLY

ITEM	PART NO	QTY	DESCRIPTION
1	108-067	8	5/16 Internal Tooth Lock Washer
2	028-012	4	5/16-18 X 3/4 Hex Head Cap Screw
3	03-0097	1	Cylinder Tube
4	028-280	4	5/16-18 X 1/2 Hex Head Cap Screw
5	808-007	2	Rubber Grommet
6	108-135	2	1" SAE Flat Washer
7	74-0070	1	Cylinder Sleeve
8	051-041	1	3-1/2" Piston
9	041-074	1	Piston O-Ring
10	167-240	1	14MM Gasket
11	028-239	1	9/16-12 X 1-1/4 Hex Head Cap Screw
12	73-0290	1	Piston Rod
13	096-271	1	1/4-28 Zerk
14	73-0294	1	Cylinder Cap
15	016-005	1	3/8 Diameter Steel Ball
16	061-050	1	1/4 X 1-1/2 Spring Pin
17	03-0096	1	Lift Cradle
18	028-207	4	3/8-16 X 3/8 Lock Set Screw
19	73-0323	1	Tire Guard

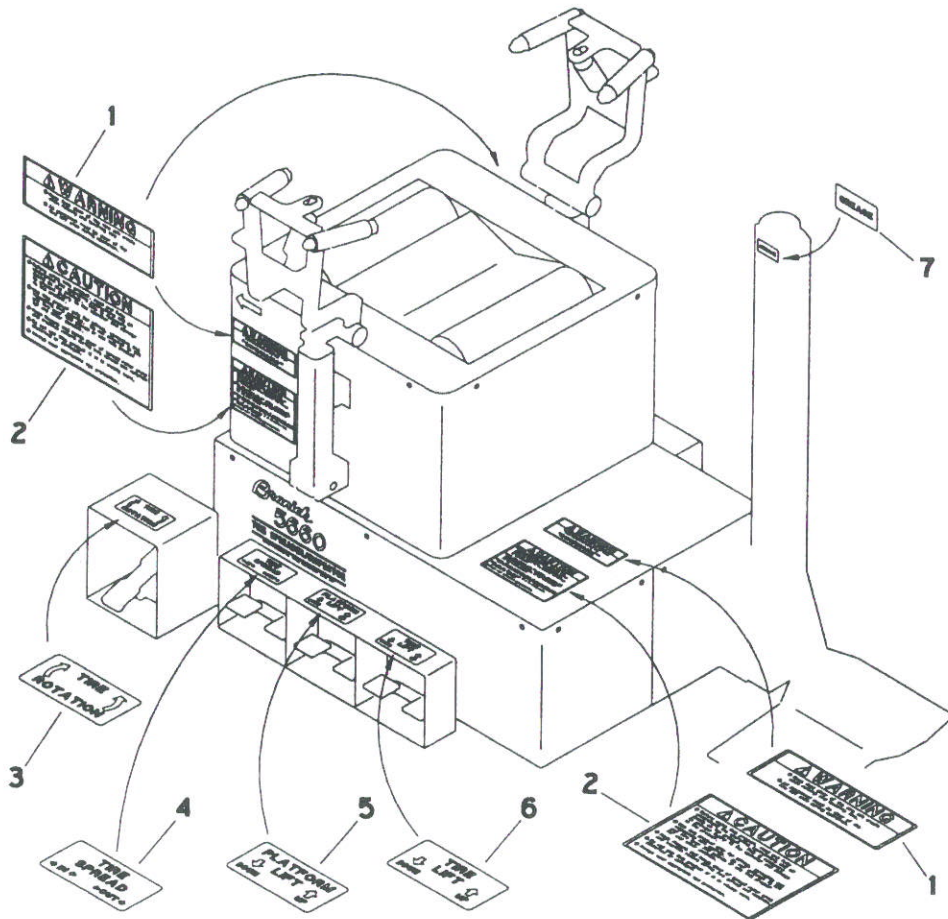


PNEUMATIC COMPONENTS ASSEMBLY

ITEM	PART NO	QTY	DESCRIPTION
1	885-081	1	Muffler
2	878-041	1	Muffler Bracket
3	096-058	2	1/2 NPT Close Nipple Fitting
4	096-025	4	1/2 NPT Swivel Elbow Fitting
5	096-070	1	1/2 NPT Tee Fitting
6	028-010	2	1/4-20 X 3/4 Hex Head Cap Screw
7	055-160	6	1/4-20 Nylon Hex Lock Nut
8	01-0103	1	Hose (8")
9	D20-009	As Req'd	1/2 OD Airline
10	D20-007	As Req'd	1/4 OD Airline
11	096-346	2	1/8 NPT X 1/4 Tube 90 Degree Fitting
12	190-240	1	Pilot Valve
13	60-0017	4	1/2 NPT X 1/2 Tube 90 Degree Fitting
14	Ref	1	Spread Cylinder (See Main Assembly Item 6)
15	096-013	1	1/4 NPT Hex Nipple
16	885-035	4	Muffler
17	190-085	1	Quick Exhaust
18	096-342	15	1/4 NPT X 1/4 Tube 90 Degree Fitting
19	Ref	1	Pivot Manifold (See Main Assembly Item 16)
20	096-340	7	1/4 NPT X 1/4 Tube Straight Fitting
21	190-222	1	1/2 NPT Flow Control
22	096-075	2	1/2 NPT Street Elbow Fitting
23	018-033	1	Filter/Regulator/Lubricator
24	73-0272	2	Filter/Regulator/Lubricator Guard
25	01-0106	1	Coil Hose
26	228-047	1	Sprocket
27	251-008	1	Key
28	032-007	1	Gearbox
29	251-037	1	Key
30	034-041	1	Flex Coupler
31	259-040	1	Air Motor
32	186-073	1	Air Motor Spacer Plate
33	01-0104	2	Hose (16")
34	028-077	4	1/4-20 X 2 Hex Head Cap Screw
35	028-059	4	5/16-18 X 1-1/4 Hex Head Cap Screw
36	055-145	8	5/16-18 Nylon Hex Lock Nut
37	108-123	4	5/16 SAE Flat Washer
38	108-008	4	1/4 Internal Tooth Lock Washer
39	028-210	6	1/4-20 X 5/8 Hex Head Cap Screw
40	03-0111	1	Treadle Valve Guard
41	980-086	1	3/4 Straight Conduit Connector
42	B40-003	18"	3/4 Flex Conduit
43	980-085	1	3/4 X 45 Degree Conduit Connector
44	190-241	1	Treadle Valve
45	50-0041	4	#8-32 X 1 Flat Head Machine Screw
46	055-082	4	#8-32 Hex Nut
47	03-0075	1	Foot Pedal Guard
48	03-0074	3	Valve Pedal
49	061-005	3	1/8 X 1 Spring Pin
50	039-062	6	Sleeve Bearing
51	Ref	1	Base (See Main Assembly Item 61)
52	028-333	3	5/16 X 1/2 Hex Socket Head Shoulder Screw
53	055-089	3	1/4-20 Hex Keps Nut
54	03-0073	3	Valve Lever Arm

PNEUMATIC COMPONENTS ASSEMBLY

ITEM	PART NO	QTY	DESCRIPTION
55	096-004	6	1/4 NPT Hex Socket Plug
56	60-0016	1	Spring Center Valve
57	60-0015	2	Detent Valve
58	190-249	2	1/4 NPT Flow Control
59	096-339	3	1/4 Tube Union Tee Fitting
60	03-0072	1	Valve Mount Bracket
61	108-067	4	5/16 Internal Tooth Lock Washer
62	028-161	12	#10-24 X 1 Pan Head Machine Screw
63	055-057	12	#10-24 Hex Nut
64	028-012	8	5/16-18 X 3/4 Hex Head Cap Screw
65	096-038	1	1/4 NPT Street Elbow Fitting
66	885-036	2	1/4 NPT Flow Control Muffler
67	01-0107	1	Hose (12")



INSTRUCTIONAL DECALS

ITEM	PART NO	QTY	DESCRIPTION
1	80-0058	3	Warning Decal
2	80-0057	3	Caution Decal
3	80-0055	1	Tire Rotation Decal
4	80-0054	1	Tire Spread Decal
5	80-0053	1	Platform Lift Decal
6	80-0052	1	Tire Lift Decal
7	80-0056	1	Grease Decal

Model 5660 Maintenance

DAILY - Check the oil level in lubricator located at the rear of the machine. The tank of the lubricator should be about half full. If it is low, fill with 10 or 20 weight motor oil.

DAILY - Remove dirt and debris from area under spreader box using an air hose.

WEEKLY - Put a small amount of grease in the zerk at the top of the tire lift cylinder.

MONTHLY - Raise the spreader platform to the highest position. Remove the top cover of the spreader box and put a few ounces of 10 or 20 weight motor oil in 1/4 inch hole in each end of the spread cylinder. Remove also the front top panel skirt on the lower platform and put a few ounces of oil in the top of the platform lift cylinder.

NOTES